



EPL342 –Databases

Lab 4

ER Modeling (Relationships) in DDS Lite (3/3)

Panayiotis Andreou

<http://www.cs.ucy.ac.cy/courses/EPL342>



Before We Begin

- Start the DDS Lite
 - Start → All Programs → Chilli Source → DDS-Lite


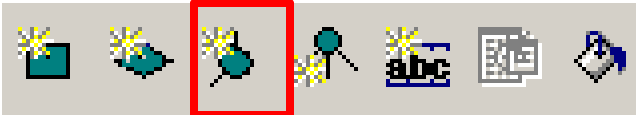


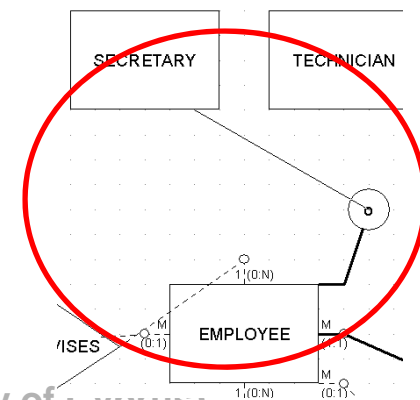
COMPANY Database

- During your [lecture 6](#), you have learned about specialization of the Employee entity:
- There are 3 types of specialization:
 - SECRETARY
 - TECHNICIAN
 - ENGINEER
- Our third job is to design the specialization relationships accordingly.



DDS Lite – Create specialization

- First of all, create the 3 new entities (SECRETARY, TECHNICIA AND SECRETARY)
- To create a specialization relationship go to Insert → Specialization or  
- Next, click on the Employee entity
- Then click on an empty place on the panel
- Drag the pencil cursor on one of the specialization entities.





DDS Lite – Create specialization

- Create other specialization relationships by first clicking on the specialization symbol and then on the specialization entity.

